



***Providing various communication functions with long range UHF Internationally well recognized best seller product***



# AT880

Library, Logistics, Military, Warehouse, Hospital etc.

## Series Highlights:

- Windows CE 5.0 / Windows Embedded handheld 6.5
- Marvell™ PXA 320 806MHz
- Memory 512MB RAM / 512MB ROM
- RFID UHF GEN2, ISO / IEC 18000 - 6C
- HF 13.56MHz ISO15693, MIFARE, ISO14443 A / B (Option)
- 1D or 2D Barcode Scanner
- WLAN (802.11 a / b / g / n Option)
- Bluetooth Class II, v2.1 + EDR
- Camera with Flash
- GPS + Glonass (Option)

Tel: +82-2-544-1436

www.atid1.com | inquiry@atid1.com



# AT880 Specification

## PERFORMANCE CHARACTERISTICS

Processor	Marvell™ PXA 320 806MHz
Operating System	Windows CE 5.0 / Windows Embedded handheld 6.5
Memory	512MB RAM / 512MB ROM

## PHYSICAL CHARACTERISTICS

Dimensions (W x L x H)	79 x 159 x 27.7 (35.2) mm
Weight	280g (PDA only, without battery)
Display	3.5" QVGA with Backlight, TFT LCD, 240×320Pixel, 262K Color
Power	3.7V 2,970mAh Lithium Polymer battery (Rechargeable) 3.7V 80mAh Lithium Polymer backup battery (Rechargeable) Input AC100V ~ 240V / Output DC 5V 3A Power Adapter
Standard I/O Port	USB 1.1 Client / USB Host & Serial (RS-232) via gender cable or Cradle
Expansion Slot	1Micro SD Slot (SDHC), 1SIM Slot, 1 SAM Slot
Audio	Phone Receiver, Speaker, Ear Jack, Microphone

## DATA CAPTURE

Barcode	1D or 2D Barcode Scanner
Camera	3Mp. Auto Focus with Flash
RFID (UHF)	Frequency : CE 865MHz ~ 868MHz FCC 902MHz ~ 928MHz Reading range : 0M ~ 5M (According to Tag & Environment) Writing range : 0M ~ 0.5M (According to Tag & Environment) RF output : 1W (MAX) Protocol : GEN2, ISO / IEC 18000 - 6C Special function : Anti - Collision
RFID (HF 13.56MHz)	Applied RFID Tag : ISO15693, MIFARE, ISO14443 A / B (Option) Reading range : According to Tag 0Cm ~ 5Cm (Internal or External)

## WIRELESS COMMUNICATION

WLAN	802.11 a / b / g / n Option
Bluetooth	Bluetooth Class II, v2.1 + EDR
Radio	MODEM 3G (GSM / GPRS / EDGE / WCDMA / HSPA+)
GPS	Internal Antenna (GPS + Glonass Option)

## USER ENVIRONMENT

Operating temperature	-20℃ to 60℃
Storage temperature	-30℃ to 70℃
Humidity	95% non - condensing
Drop Specification	1.5M Drop to concrete
Dust & Water Proof	IP65

## ADDITIONAL FEATURES

Notification	Vibrator and LED, Speaker
--------------	---------------------------

## CRADLE

Standard Interface	USB 1.1 Host / USB Client / DC Power Jack / Extra Battery Charger / Serial (RS232) via gender cable
Ethernet Interface	RJ-45 Ethernet Interface (Option)

## ACCESSORIES(OPTION)

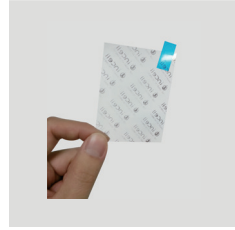
Gun Handle Grip (Pistol Grip)	Body, UHF / HF Available
Gun Handle Battery	Lithium-Ion 3.7V 5,200mAh (Rechargeable) Option

\* All Features and specifications described are subject to change without notice.

## ACCESSORIES



Adapter  
AC Cable



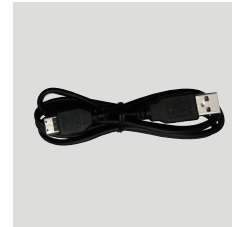
Protection  
Film



Handstrap



Stylus Pen



USB Cable

## OPTION



Cradle



GUN Handle