

<ATD100B (Desktop Reader) Quick Guide>

| Product Composition



ATD100B Main Body



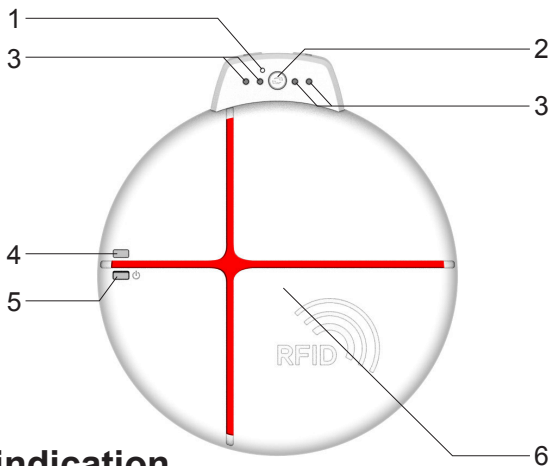
RJ 9 Gender Connector



RJ9 USB Sync Cable

| Name of each part

- 1 Reset Button
- 2 Communication Mode Switch Button
- 3 Status indicator
- 4 Charge Indicator
- 5 Power Button & Power Indicator
- 6 UHF



| Power ON / OFF & Lamp indication

Press the power button for 2 seconds to turn on the power.

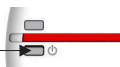


POWER

Power ON
(Green LED ON)



Power OFF
(Lamp OFF)



CHARGE

Charging
(Red LED ON)

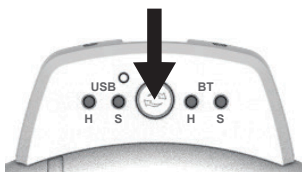


Charging Complete
(Green LED ON)



| Switch to Bluetooth / USB Communication Mode

Push the Communication Mode Switch Button, the Communication Mode Switches sequentially.



Bluetooth Mode



SPP (Red LED ON)



HID (Blue LED ON)

USB Mode



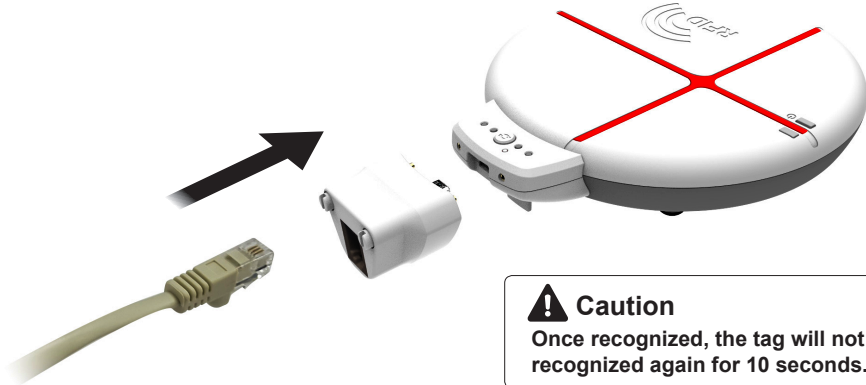
SPP (Red LED ON)



HID (Blue LED ON)

Check product installation and operation

- 1 Please connect the RJ9 gender Connector to the product body, and fix the screw using a coin or screwdriver.
- 2 Connect the RJ 9 cable to the USB port on your PC.
- 3 Press the power button for 2 seconds to turn on the power.
- 4 After running Notepad on a PC, when the tag is close to the main antenna, the data onto the recognized tag is displayed in Notepad.



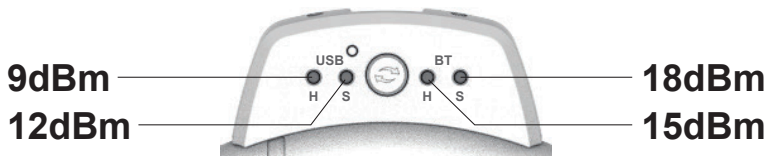
RFID Output Strength Control

- 1 Press the power button and the Communication Mode Switch Button simultaneously for 5 seconds to enter the output Strength switching mode.
- 2 Press the Communication Mode Switch Button to Control the output Strength.
- 3 Restart the machine by pressing the power button or the reset button to apply the current settings.



Output Strength

Weak ← ————— Strong



Caution

- The power is automatically turned off if it does not operate in 1 hour based on the last tag recognition time.
- If the power is turned off, press the power button again for 2 seconds to turn on the power.