



***Ergonomically designed
handheld RFID reader
delivers the highest
ruggedness and
functionality
in a wide range of
environments***



AT870A

Android 4.2 Jelly bean

Series Highlights:

- Android 4.2 (Jelly bean)
- Allwinner A20 1GHz dual-core
- Memory 1GB RAM / 8GB ROM
- RFID UHF EPC Gen2 (ISO 18000 - 6C)
- RFID HF 13.56MHz NFC (MIFARE, ISO15693), MIFARE, ISO / IEC14443 A / B (Option)
- 1D or 2D barcode scanner
- WLAN (802.11 a/b/g/n)
- Bluetooth Class II, v2.1 + EDR
- Camera with Flash
- GPS + Glonass (Option)

Tel: +82-2-544-1436

atid@atid1.com | www.atid1.com



| www.youtube.com/user/ATIDKorea

AT870A Specification

PERFORMANCE CHARACTERISTICS

Processor	Dual-Core 1.0GHz
Operating System	Android Jelly bean v.4.2
Memory	1GB RAM / 8GB ROM

PHYSICAL CHARACTERISTICS

Dimensions (W x L x H)	76 x 148 x 26 (30.5) mm
Weight	250g (PDA only, without battery)
Display	3.5" VGA with Backlight, TFT LCD, 480x640Pixel, 262K Color
Power	3.7V 2,970mAh Lithium Polymer battery (Rechargeable) Input AC100V ~ 240V / Output DC 5V 3A Power Adapter
Standard I/O Port	USB 2.0 high speed host / client & serial (RS - 232) via gender cable or Cradle
Expansion Slot	User accessible Micro SDHC card slot (up to 32GB)
Audio	Speaker, Ear Jack, Microphone

DATA CAPTURE

Barcode	1D Laser or 2D Imager Barcode Scanner
Camera	5Mp. Auto Focus with Flash
RFID (UHF)	Frequency : CE 865MHz ~ 868MHz FCC 902MHz ~ 928MHz Reading range : 0M ~ 5M (According to Tag & Environment) Writing range : 0M ~ 0.5M (According to Tag & Environment) RF output : 1W (MAX) Protocol : EPC Gen2 (ISO 18000 - 6C) Special function : Anti - Collision
RFID (HF 13.56MHz)	Applied RFID Tag : NFC (MIFARE, ISO15693), MIFARE, ISO / IEC14443 A / B (Option) Reading range : According to Tag 0Cm ~ 5Cm (Internal or External)

WIRELESS COMMUNICATION

LAN	802.11 a/b/g/n Compliant
Bluetooth	Bluetooth Class II, v2.1 + EDR
Radio	MODEM 3G (GSM / GPRS / EDGE / WCDMA / HSPA+)
GPS	Internal Antenna (GPS + Glonass Option)

INTERACTIVE SENSOR TECHNOLOGY

Sensor	3D Digital Linear Acceleration Sensor and 3D Digital Magnetic Sensor
--------	---

USER ENVIRONMENT

Operating temperature	-10℃ to 60℃
Storage temperature	-30℃ to 70℃
Charging temperature	-0℃ to 45℃
Humidity	5% to 95% non - condensing
Drop Specification	1.5M Drop to concrete
Dust & Water Proof	IP65

ADDITIONAL FEATURES

Notification	LED, Vibrator and Mono speaker
--------------	--------------------------------

CRADLE

Standard Interface	USB 2.0 Host / USB Client / DC Power Jack / Extra Battery Charger / Serial (RS232) via gender cable
--------------------	--

ACCESSORIES(OPTION)

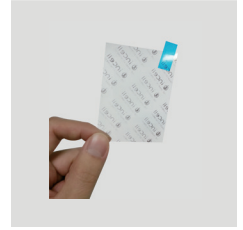
Gun Handle Grip (Pistol Grip)	Body, UHF / HF Available
Gun Handle Battery	Lithium-Ion 3.7V 5,200mAh (Rechargeable) Option

* All Features and specifications described are subject to change without notice.

ACCESSORIES



Adapter
AC Cable



Protection
Film



Handstrap



USB Cable

OPTION



Cradle



GUN Handle